

North Korea Crash Course









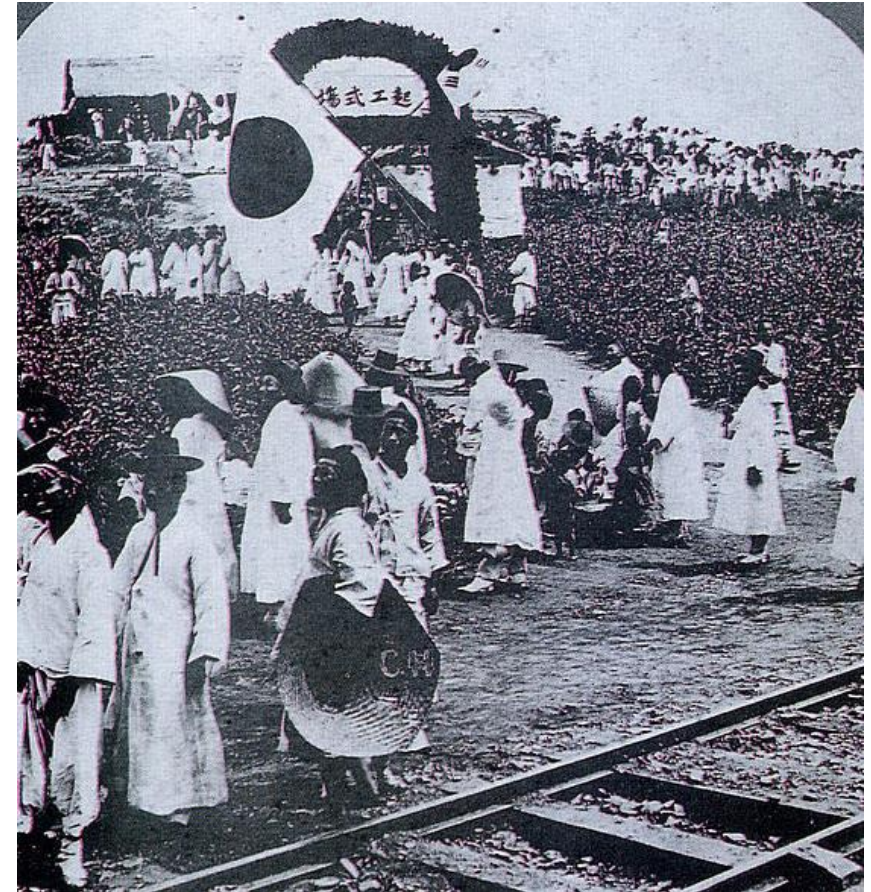
CHINA

NORTH KOREA

SOUTH KOREA

Korean Peninsula

- Monarchy known as Joseon until 1905
- Japanese protectorate until 1910
- Japanese colony until 1945
- Divided in half by the Soviet Union and the United States
 - North Korea (backed by Soviet Union)
 - South Korea (backed by the United States)
- Korean War (1950-1953)



North Korea (DPRK)

Democratic People's Republic of Korea

- Modern totalitarian state
- Officially still at war with South Korea
- Juche ideology, “self-reliance”
- Songun Policy, “military first” policy
 - 4th largest military in the world
 - 35% of population is combat-ready



<https://www.youtube.com/watch?v=mxLBywKrTf4>

<https://www.youtube.com/watch?v=OAY5j5m9sTk>



North Korean Supreme Leaders

Eternal Leaders



Kim Il-Sung

1948 - 1994

“The Great Leader”



Kim Jong-Il

1994 - 2012

“The Dear Leader”



Kim Jong-Un

2012 - Present

“The Supreme Leader”



위대한 김일성동지와 김정일동지는 영원히 우리의 함께 지신다

38th Parallel or DMZ

Demilitarized Zone

- Most heavily militarized border in the world
 - 160 miles long, 2.5 miles wide
- Landmines, automated machine guns, propaganda, guns, motion sensors, artillery, etc.
- Joint Security Area (Panmunjom)

